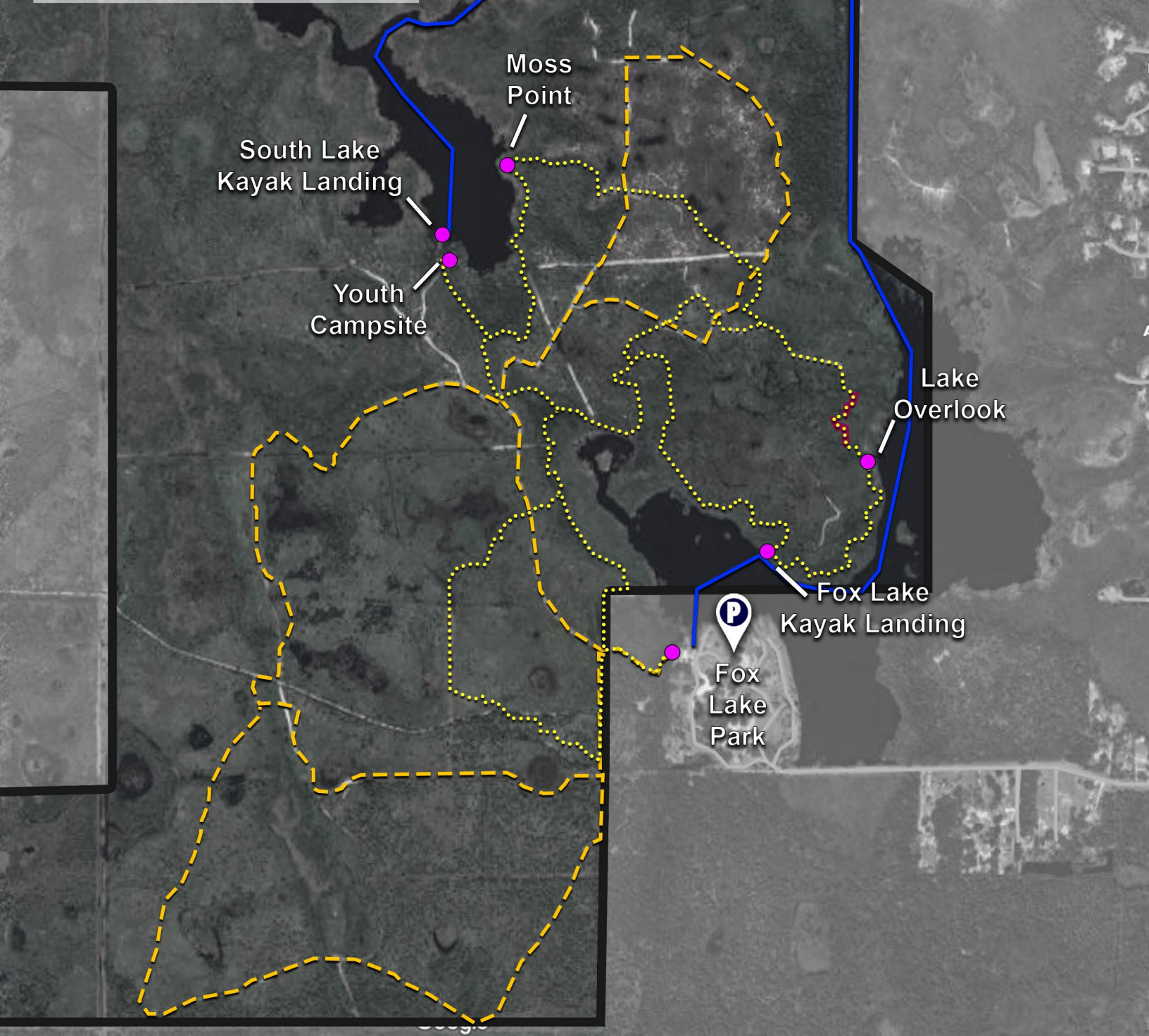
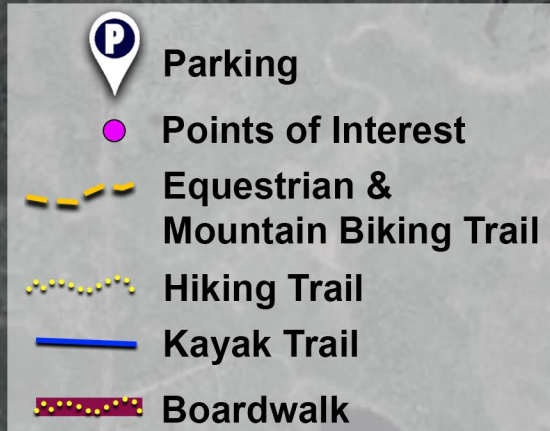


Fox Lake Sanctuary Trail Map



Fox Lake Sanctuary Trail Map

Description:

Fox Lake Sanctuary is a 2,568-acre nature Sanctuary managed by the Brevard County Environmentally Endangered Lands Program. The Sanctuary is located west of Fox Lake Park in Titusville.

Fox Lake Sanctuary is home to a variety of habitats including wet prairie, floodplain swamp, scrubby flatwoods, mesic flatwoods and oak-saw palmetto scrub.

The trailhead is located near the Fox Lake Park boat ramp. Visitors can enjoy hiking, mountain biking, equestrian trails and scenic lake overviews. A 3.52-mile marked paddling trail extending from Fox Lake to South Lake is also available.

Parking:

To enjoy the many trails of Fox Lake Sanctuary that take you through various habitat types, please park in the parking area in the northwest corner of Fox Lake Park past the boat ramp, located at 4400 Fox Lake Rd., Titusville, FL 32796. There is a kiosk at the trailhead that contains information on the sanctuary, map of the trail systems, and a brochure box.

Trail Instructions:

Fox Lake Sanctuary is located west of Interstate 95 and north of State Road 50 in Titusville, FL. There is only one trailhead for Fox Lake Sanctuary, and it is located within Fox Lake Park in the northwest corner of the park. To get there, you drive around Fox Lake Park and pull into the designated parking area for Fox Lake Sanctuary that is west of the boat ramp and dock.

The trails are made up of 4.4-miles of hiking trails, 6.2-miles of biking/equestrian trails, and 3.5-miles of paddling trail. The trailhead by the kiosk will start you on the Blue Trail, which leads to all the other hiking, biking, and equestrian trails.

Kayak Launch/Paddling Trail: To the north of the parking area is the kayak launch for the 3.52-mile Paddling Trail. The trail will take you east through Fox Lake, then turn north through canals, and then after looping back down south ends at South Lake and the Primitive Campsite.

Blue Trail: While on the Blue Trail, there is the option to take the 1.45-mile looped Red Trail, which branches off from it to the east in two locations. After passing the first Red Trail entrance, you will reach the entrance to the 6.24-mile Equestrian/biking trail, which you can take in a loop to the west or a loop to the east. The 1.03-mile out and back Blue Trail ends at the youth campsite, which is also the end of the Kayak Paddling Trail.

Red Trail: The 1.45-mile Red Trail is a loop which begins and ends at the Blue Trail. While on the Red Trail, you will pass an entrance to the 1.3-mile Yellow Trail, which is a loop and connects back onto the Red Trail. If you chose to stay on the Red Trail, you will pass two Equestrian/biking trails, before reaching the second entrance of the Yellow Trail. You will once more pass the Equestrian/biking trail before reaching the option to

take the white Spur Trail (dead end) or continue west on the Red Trail which dead ends at the Blue Trail.

Equestrian/Biking Trail: The horse trail can be reached by following the Blue Trail west from the trailhead for 0.12 miles. There is signage at the junction that indicates where the Equestrian/biking Trail branches off and the Blue Trail continues.