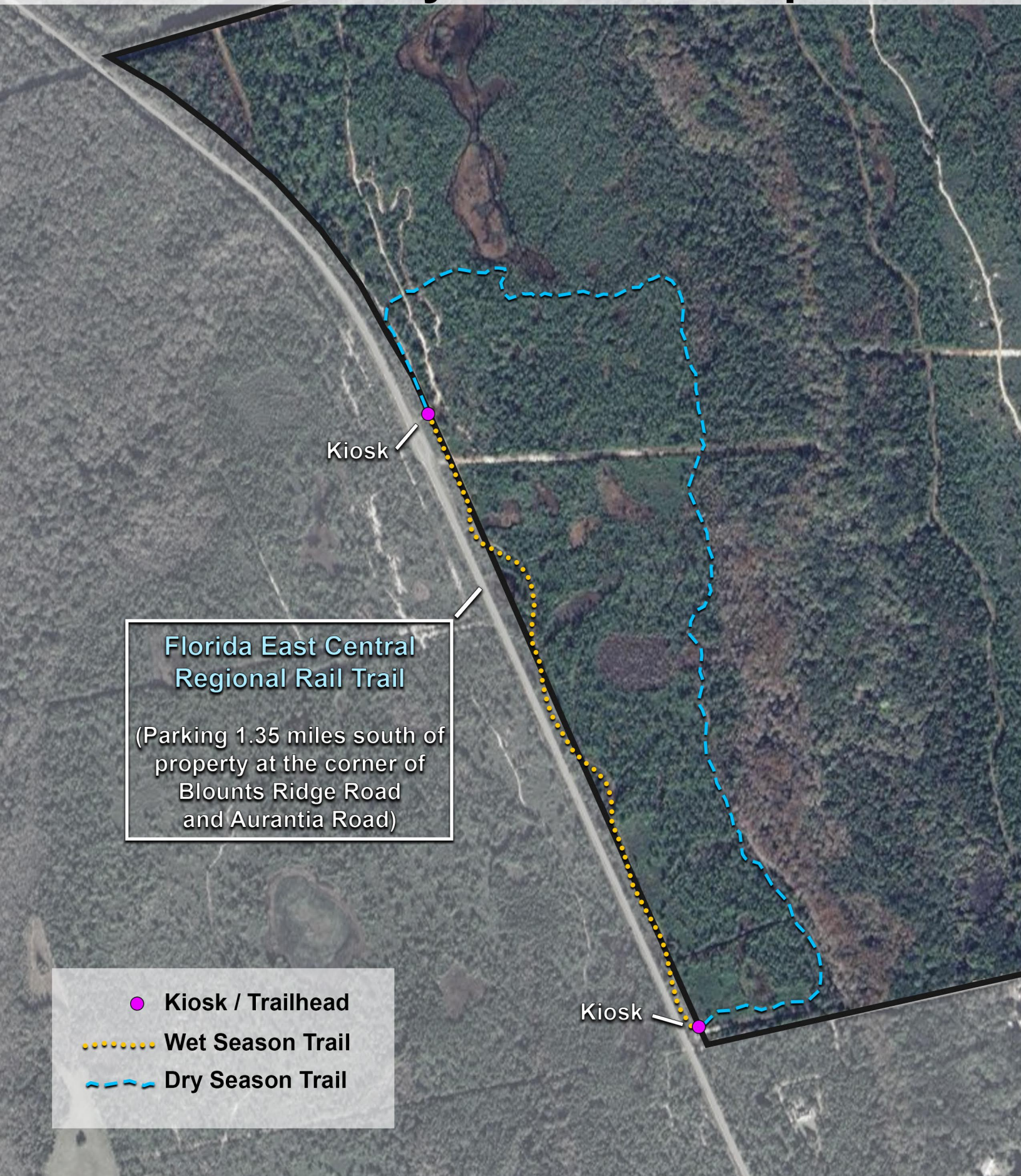


Scottsmoor Flatwoods Sanctuary West Trail Map



Kiosk

Florida East Central
Regional Rail Trail

(Parking 1.35 miles south of
property at the corner of
Blounts Ridge Road
and Aurantia Road)

Kiosk

● Kiosk / Trailhead

..... Wet Season Trail

- - - - - Dry Season Trail

Scottsmoor Flatwoods Sanctuary West Trail Map

Description:

This 1,500-acre sanctuary straddles both sides of I-95, just south of Exit 5A (Stuckway Road) in Scottsmoor. The site protects a variety of habitats including scrub, pine flatwoods, oak hammocks, depression marsh, forested wetlands, and cypress swamp. Wildlife species include white-tailed deer, bobwhite quail, bobcat, wood storks, various wading birds, and gopher tortoises.

Parking:

To enjoy the Scottsmoor Flatwoods Sanctuary West's wet season and dry season trail that takes you through mesic flatwoods, scrubby flatwoods, depression marshes, some oak-saw palmetto scrub, and the edge of a cypress swamp – please park in the designated parking area off Blounts Ridge Road at the East Central Regional Rail Trail parking lot. Scottsmoor Flatwoods Sanctuary West will be located 1.35 miles northwest on the East Central Regional Rail Trail bike pathway. There are two walk-through gates to access the property, one to the south end of the property and one to the north end.

Trail Instructions:

Scottsmoor Flatwoods Sanctuary is made up of two units separated by I-95, one unit to the east and one to the west. For simplicity purposes this page will only talk about the trail systems for Scottsmoor Flatwoods Sanctuary West.

Scottsmoor Flatwoods Sanctuary West has two trails, one for the dry season (White trail) and one for the wet season (Blue trail). The trails are all multi-use and can be used for hiking, mountain biking, and equestrian activities. The trails connect to each other to make a full circle loop. The White trail is 1.35 miles long and the Blue trail is 0.67 miles long, totaling approximately 2 miles of trail.

There are two trailheads right off of the East Central Regional Rail Trail. Both north and south trailheads have access to either the Blue or White trail.

The Blue trail takes you along the west edge of the property and goes north/south (depending on which trailhead you start on). The Blue trail takes you through the drier, scrubby flatwoods/oak-saw palmetto scrub habitats. The Blue ends at the opposite trailhead.

The White trail goes a little east from the trailheads and then curves north/south (depending on which trailhead you start on). The White trail takes you through the wetter, mesic flatwoods/edge of cypress swamp habitats. It then curves westerly and ends at the opposite trailhead.