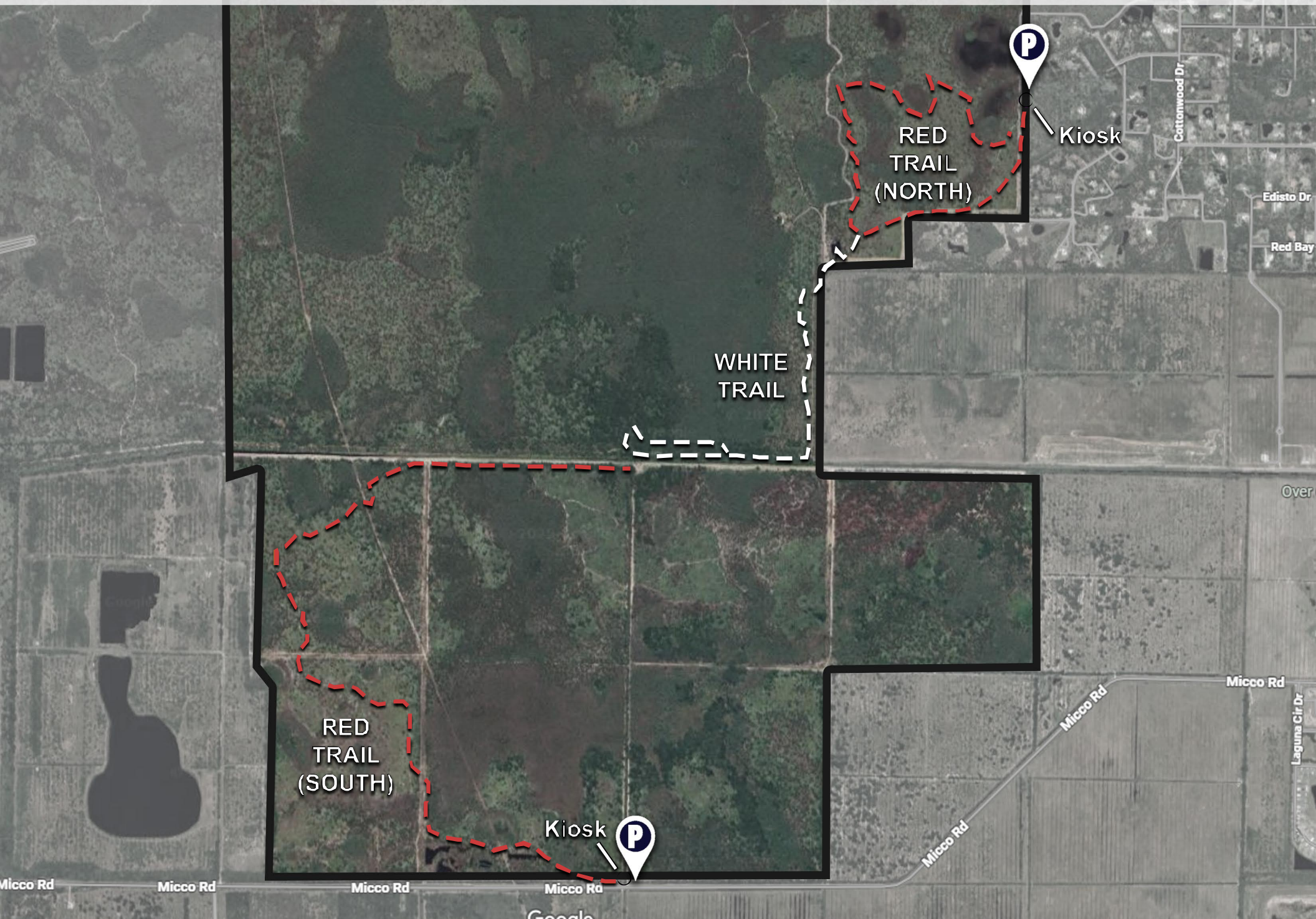


# Grant Flatwoods Sanctuary Trail Map



# Grant Flatwoods Sanctuary Trail Map

## Description:

Grant Flatwoods Sanctuary is a 2,600-acre nature sanctuary managed by the Brevard County Environmentally Endangered Lands Program. The Sanctuary is located between Grant Road and Micco Road.

The Grant Flatwoods Sanctuary is home to a variety of habitats including mesic and wet flatwoods, cypress swamp, depression marshes and winding creeks.

The north trailhead is located at the end of the cul-de-sac at 7000 Crepe Myrtle Dr. Grant-Valkaria, FL 32949. The south trailhead is located in the parking area off Micco Road, a mile and a half east of I-95.

## Parking:

To enjoy the trails of the Grant Flatwoods Sanctuary, you can park at the end of the cul-de-sac at 7000 Crepe Myrtle Dr., Grant-Valkaria to access the northern trailhead, or in the parking area off Micco Road to access the southern trailhead. This parking area is located off Micco Road, 1.5 miles east of I-95. There are kiosks at the trailheads that contain information on the sanctuary, map of the trail systems, and a brochure box.

## Trail Instructions:

The sanctuary is divided by a canal that runs through the center of the sanctuary going from east to west. There is a White Trail and a Red Trail in the northern portion of the sanctuary and a Red Trail in the southern portion of the sanctuary. The northern trails do not connect with the southern trail.

Micco Road South Trailhead: The South Trailhead has access to one trail, the Red Trail. This trail will take you west from the trailhead and kiosk before curving north. Once you reach the canal, it will continue east before reaching a dead end. This is an out-and-back trail so you would need to return in the direction you came to return to the trailhead.

Crepe Myrtle Road North Trailhead: From the parking area you will find the entrance to the trailhead next to the informational kiosk. The Red Trail is a loop that will bring you through mesic flatwoods, cypress swamp, depression marshes, and then back to the trailhead. At the southwestern-most portion of the trail, you will come to the access of the White Trail, which will take you south and then west along the canal in the center of the sanctuary. This trail does not loop back, so you will need to return the way you came to return to the red trail loop.