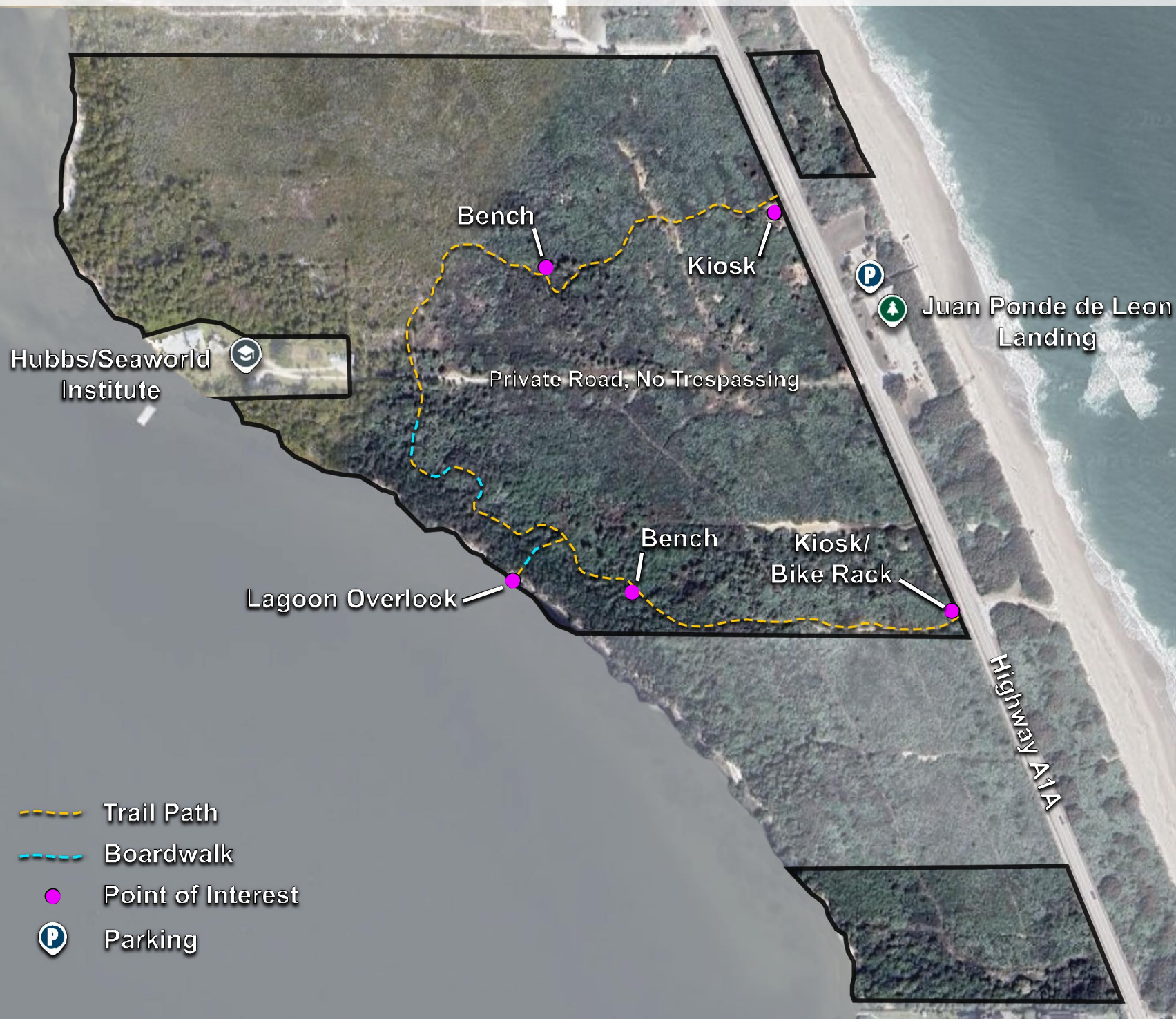


# Coconut Point Sanctuary Trail Map



# Coconut Point Sanctuary Trail Map

## Description:

The 62-acre habitat of coastal strand, oak scrub, coastal oak forest, and mangrove forest at the Coconut Point Sanctuary rolls over ancient sand dunes from the Atlantic Ocean to the Indian River Lagoon. Early Native Americans, known as the Ais Indians, once lived along the shores of the Indian River Lagoon in this area and ate native plants, shellfish, birds, and fish. It was also near this site that historians believe Juan Ponce de Leon set foot in Florida in 1513. Along the hiking trail is an observation platform over the Indian River Lagoon--an ideal spot to view wading and shorebirds, soaring osprey, and the occasional pod of dolphin. Although they are hard to see, juvenile sea turtles also swim in the Indian River Lagoon and feed among the sea grasses growing here.

## Parking:

To enjoy the Coconut Point Sanctuary's mile trail from dune to Lagoon please park at Juan Ponce de Leon Landing Park (4005 Highway A1A).

## Trail Instructions:

The trail's two entry points are located along Highway A1A. The main north trailhead begins across from Juan Ponce de Leon Landing Park. The second trail access point begins approximately 0.1 miles to the south of the north trailhead.

At the main trailhead you will find a kiosk with maps and information about the trail.

From there, you will travel east on the trail, with the first point of interest being a bench to rest.

The trail continues east until it will eventually curve to the south where you will come to a fork in the road. If you take a right at the fork, you will reach a second point of interest, a lagoon overlook. If you take a left at the fork, you will reach another bench, before reaching the exit of the trail at the south access point along Highway A1A.